

O'Fallon

MISSOURI



CommunityLife Magazine and Resource Guide published in partnership with

O'Fallon
CHAMBER OF COMMERCE

TABLE OF CONTENTS



2

Welcome

3

O'Fallon Chamber of Commerce

4

History

6

Community Profile

7

Parks and Recreation

11

Area Attractions

16

Dining and Shopping

17

Neighborhoods

19

Education

23

Health Care

25

Senior Living

26

Worship

28

Advertisers Directory

11

A recent Zagat survey ranked the St. Louis Zoo the number-one zoo/animal park in the nation.



25

O'Fallon appreciates its active senior volunteer force for its help with city-sponsored activities, programs and events.



CommunityLink

communitylink.com

1 800 455-5600

A publishing service of Craig Williams Creative, Inc.

production

production manager	PAM KELLERMAN
director of traffic	SANDY PRANGE
director of media & content	DIANA VAUGHN
copywriting	MICHEEN COLLINS
copy editor	LAURA WILCOXEN
proofreader	CHRISTINA REESE
director of photography	LISA LEHR
photography	O'FALLON
	CHAMBER OF COMMERCE
	SSM ST. JOSEPH HEALTH
	SHAWN WILLIAMS
creative director	CRAIG WILLIAMS
design	SHARON SVEC
marketing design	ERIN GRAY

business development

sales assistant	DEBBIE MOSS
vp of business development	GEORGE PRUDHOMME
business development	BONNIE EBERS
sales representative	RYAN BELSKY
customer service director	JOYCE WINDER
mail technician	HEATHER STOWERS

advertising

director of advertising	MATT PRICE
ad research	ELLEN BOCZEK
	JOYCE PYATT
	KATHY SCOTT
	AMY SCHWARTZKOFF
ad traffic	CAROL SMITH
ad design	JENNIFER CONWELL
	PAUL LILLY
	KELLY PICKETT
	MATT PRICE
	ALLAN SIMPSON
	BECKY TRAIL
	KACEY WOLTERS

administrative support

administrative support	KATHY HAGENE
	CAROL SMITH
reception	DONNA KELLY
account support	TARA BOLINGER
	TRICIA CANNEDY
human resources assistant	TERESA CRAIG

information technology

publishing systems coordinator	CHRISTOPHER MILLER
--------------------------------	--------------------

executive leadership

chairman and founder	CRAIG WILLIAMS
chief financial officer	RHONDA HARSY

ON THE COVER An old stone chimney marks the spot of the former Fort Zumwalt (circa 1812), said to have been visited by Daniel Boone.

ABOUT This book is published by CommunityLink and distributed through The O'Fallon Chamber of Commerce. For advertising information or questions or comments about this book contact CommunityLink at (866) 381-9759 or by e-mail at info@communitylink.com

FOR INFORMATION The O'Fallon Chamber of Commerce, 2897 Highway K #200, O'Fallon, MO 63366, (636) 240-1818, Fax (636) 281-8288, www.ofallonchamber.org

© 2004 Craig Williams Creative, Inc., 4742 Holts Prairie Road, Post Office Box 306, Pinckneyville, IL 62274-0306, (618) 357-8653. All rights reserved. No portion of this book may be reproduced without the expressed written consent of the publisher.

WELCOME

*Time-Honored Character,
Time-Tested Innovation, Time for Community*

In O'Fallon, character still counts. We've always integrated character into the culture of our city, but now it's official! In 2001 the community was registered as Missouri's first City of Character. This designation indicates that elected officials, community leaders and citizens-at-large recognize the importance of good character in building a safe, productive and caring city. Since receiving this recognition, O'Fallon has developed a program that helps promote character awareness and community improvements. It involves families, city government, schools, religious organizations and businesses, all working together for a better future for everyone.



O'Fallon is a community of dedicated citizens.

Time for Progress

O'Fallon is the fastest-growing community in St. Charles County, and it's among the fastest-growing cities in the nation. It jumped from a population of 18,698 in 1990, to more than 50,000 in 2000, to an estimated 66,000 — and counting. By 2010, O'Fallon is expected to be the home of nearly 90,000 residents.

Interstate access includes I-70 and I-64. O'Fallon is also connected by state highways 79, 94, 370 and K, with the Page Avenue Extension, Highway 364, underway. U.S. Highways 40 and 61 complete a comprehensive network that ensures quick entrance to and exit from the city for commuters, tourists, business travelers, freight haulers and local residents.

Time to Connect

O'Fallon is well connected by roadways, railways, airways and even waterways. In addition to the major highways leading into O'Fallon, St. Louis Lambert International Airport is just 14 miles east, and the Spirit of St. Louis Airport is within five miles of the city. Three smaller airports are located in St. Charles County and cater to private and corporate aircraft.

Freight is moved quickly and easily through O'Fallon's six distributors: Roadway, Stege, R.L. Smith, S & H, Heartland Express and Distribution Transportation Services. Norfolk and Southern Railroad provides rail



freight service to most O'Fallon industrial sites, while barge transportation facilities for the city are located in St. Louis.

Time to Commute

Those who work in St. Louis or surrounding areas can commute quickly, effortlessly and reliably via major connecting highways. From small companies to major industries, employers are pleased with their access to a large pool of clients, customers and employees.

Time for Family

This is a great place to raise a family, with low property tax rates, three school districts with Triple-A ratings, and numerous employers and business opportunities both inside and outside the city limits. Beautiful city and county parks enable individuals and families to play or relax. Superb fire and police protectors safeguard the city. Outstanding health care and ambulance services provide assurance and comfort to the ill. And new business, economic and community developments occur every day.

Time to Explore

Once you discover all that O'Fallon has to offer, you'll see that it's a great place to do business and an even better place to live. This publication will open the door, but we encourage you to come visit to learn even more!

 **The Old Tax House**

We Offer

ins e file

**28 Years
Same
Location**

Income Tax Preparation

*It's our job to make sure that you
do not overpay your taxes!*

- Full Bookkeeping Services
- We Do Out-of-State Forms
- Electronic Filing

MEMBER
QuickBooks Professional
Advisor Program

8810 Veterans Memorial Parkway • O'Fallon, MO
636-240-7706 • 636-272-7704

THE O'FALLON CHAMBER OF COMMERCE

At the O'Fallon Chamber of Commerce, we're committed to promoting and enhancing our membership and the community.

For more than 50 years, the O'Fallon Chamber has been the organization the community has counted on as its source for local information, relocation assistance and business referrals.

Since the mid-1990s, the City of O'Fallon has experienced phenomenal growth. During this time, as other areas of the state and the nation were facing an economic downturn, O'Fallon grew from 18,698 in 1990 to an estimated 66,000 in 2004 while attracting its two largest employers, MasterCard International and Citigroup.

As businesses continue opening and our community continues to grow, so does the Chamber. Now numbering more than 550 businesses, the Chamber is the organization businesses turn to when they want to be heard. Committees such as Governmental Concerns, Education, Transportation/Economic Development, Telecommunications/Technology and

Community Outreach allow members to share their ideas and voice their opinions on items that affect their business and our community.

The Chamber also offers valuable networking opportunities for members to seek referrals and grow their business. From monthly membership meetings, to networking groups, to business after hours and other special events, the O'Fallon Chamber is one of the most active and one of the largest advocacy organizations in the St. Louis metropolitan area.

The O'Fallon Chamber of Commerce prides itself on both tradition and innovation. Today's Chamber contributes new ideas, innovative new programs and an atmosphere of excitement to match the dynamic growth of our area while helping to promote the history and heritage of our community.

If you'd like to learn about the Chamber and the benefits of membership, contact us today. We look forward to serving you as we strive to become the premier business organization in O'Fallon and St. Charles County.

Time to Grow

O'Fallon Chamber of Commerce

2897 Highway K
(St. John's Bank Building)
Suite 200
O'Fallon, Missouri 63366
Phone: 636-240-1818
Fax: 636-281-8288
E-mail:
info@ofallonchamber.org
Web site:
www.ofallonchamber.org



The O'Fallon Chamber of Commerce provides businesses the services they need to help them succeed.

Holiday Inn

Wentzville/O'Fallon

900 Corporate Parkway
Wentzville, MO 63385

Located exit 212 off I-70 and 5
miles from O'Fallon.



For Reservations Call: 888-835-7753
or 636-327-7001

HISTORY

Time Travel



Before busy thoroughfares linked east-central Missouri to distant places, the Missouri, Mississippi and Illinois rivers served as tributaries to lush prairies and forest hunting grounds for Native Americans. Today, Interstate 70 bisects O'Fallon.

Most of the region's earliest settlers were French, but Spain controlled the area until it was returned to France in 1800. In 1803, the United States acquired the land that now includes St. Charles County as part of the Louisiana Purchase.

The Daniel Boone and Zumwalt families were among the earliest

American settlers to immigrate to the area from Kentucky. En route, Adam Zumwalt carved a canoe from a poplar tree to ferry his furniture and copper stills. In present-day Lincoln County, he cleared a site and, in 1798, built a Pennsylvania Dutch-style cabin out of logs cut from white oak trees.

The Zumwalt brothers — Jacob, Christopher, Adam and George — were Revolutionary War veterans. After moving to Missouri, they farmed, ground grain and distilled "moonshine," trading with Native Americans who hunted nearby. Adam Zumwalt forged friendships with the Sac, Kickapoo and Winnebago tribes,

and helped Louisiana Territory Governor James Wilkinson to mediate Indian-settler conflicts.

However, tensions escalated as Britain tried to disrupt American shipping and control the fur trade. Since they lacked fighting forces, the British paid Indian allies for scalps in what was called America's "Second War for Independence." Fort Zumwalt sheltered up to 10 families during this conflict.

Fort Zumwalt was constructed on Jacob Zumwalt's farm in 1812, when the Indians from the north began attacking and killing settlers in St. Charles County. The fort was located within the boundaries of what is now Fort Zumwalt Park, just south of I-70. It was one of some 30 War of 1812 forts built in Missouri territory. It served not only as a refuge for settlers, but also as a place for the territorial militia to gather and rest during their constant travels from fort to fort to scout for Indians.

The War of 1812 officially ended in the East in 1814, but fighting persisted in the Midwest until the United States signed peace treaties in 1815 and 1816 with a number of Native American tribes to the north.

After the war, westward migration flowed through present-day O'Fallon along the Booneslick Trail. In a few short years, the Booneslick Trail would become the first section of the



*Your independent,
neighborhood bank.*

- ▶ Free Checking
- ▶ Free OnLine Banking
- ▶ Loans of all kinds
- ▶ Exceptional service
- ▶ Locally owned

www.stjohnsbank.com



2897 Highway K (just north of N) • O'Fallon • (636) 978-7404

Santa Fe, California and Oregon trails. In the 20th century, parts of the trail became U.S. Highway 40, then I-70. The Booneslick Trail awaits recognition as one of the first two American trails west of the Mississippi River.

In 1817, an aging Jacob Zumwalt sold the family's plantation to Major Nathan Heald for \$1,000. Heald, who was a War of 1812 veteran, added several buildings to the homestead before he died in 1832. His family continued to live in the log cabins that had once been the core buildings for Zumwalt's Fort and added acreage to the farm.

In the 1880s, Nathan Heald's son, Darius, moved with his family into Stony Point, a brick house built near the Zumwalt home. The City of O'Fallon restored the Darius Heald home in 2001.

Many German settlers came to the area during the 1830s, inspired by Gottfried Duden's *Report on a Journey to the Western States of North America*. The report was based on his experiences living in St. Charles in 1824. By

1870, about 75 percent of the families in St. Charles County were German. Duden himself lived near the Boone family until 1827. The German immigrants were known for their industrial aptitude and work ethic.

As a city, O'Fallon's history begins in the 1850s with Arnold Krekel, a German immigrant who invested in property in the heart of present-day O'Fallon. Krekel, who lived in St. Charles, also founded a German-language newspaper, *The St. Charles Democrat*; invested in the North Missouri Railroad; and held a number of offices, including U.S. District Court Judge and Missouri state legislator. During the Civil War he was a colonel in a Union regiment of Home Guards. Arnold Krekel never moved to O'Fallon.

In 1854, Judge Krekel granted the North Missouri Railroad right-of-way through his "Krekel Addition," along with permission to build a

depot on his property. The North Missouri Railroad, which extended from St. Louis to the Missouri/Iowa border, became a major route for trade and passengers. In 1856, Judge Krekel named the depot O'Fallon Station after his friend John O'Fallon, the railroad's president and a noted philanthropist.

However, it is Arnold Krekel's younger brother, Nicholas, who is recognized as O'Fallon's first citizen. He built the first home within the city limits in 1856. He was also the city's first station agent and postmaster, working on the main floor and living upstairs in the same building.

In 1860, the "Krekel Addition" was renamed O'Fallon and, in 1912, O'Fallon was incorporated. Civic Park is located within the original Krekel Addition. It includes Civic Hall and the O'Fallon Historical Society Museum, which is housed in an 1880s log cabin moved to the site in 1976.

In the mid-1950s, Interstate 70 linked O'Fallon to St. Louis and other major metropolitan areas. A growing agricultural economy was supplemented by St. Louis jobs, expanding commercial,



Historic John D. McGurk's Public House

industrial and residential communities. Today, O'Fallon still maintains several buildings and sites of historical interest. Fort Zumwalt Park remains a popular attraction, encompassing 48 wooded acres and a fishing lake. The O'Fallon Veterans Memorial Walk and the Dames Park Vietnam War Memorial are popular attractions that draw history buffs, veterans and recreation enthusiasts alike.

Historic John D. McGurk's Public House, located in the former Westhoff Mercantile building, remains a place where friendly folks gather for vintage ambience, comfort food, tall tales and a pint of ale.

O'Fallon continues to be a thriving community of character, vision and progress. City leaders and residents look forward to adding their own pages to the city's long and proud history.



The Darius Heald home was restored in 2001.

O'FALLON
is a true community.

a place you can
build a business,
a place you can
raise a family,
a commitment to
quality of life.

Economic Development Offices • 100 North Main Street • O'Fallon, Missouri 63366
636-240-2000 • www.ofallon.mo.us

COMMUNITY PROFILE

Things Around Here Are Running Like Clockwork

Population Trends

Current Population	66,000-plus
1970	7,018
1980	8,677
1990	18,698
2000	51,291
2001	57,454
2002	61,796
2003	65,834

Source: O'Fallon Economic Development Office

Employment

SELECTED METRO PAYROLL EMPLOYMENT

Government	25%
Manufacturing	23%
Retail	22%
Finance, Insurance, Real Estate	12%
Transportation and Utilities	9%
Wholesale	9%

Source: St. Louis RCGA

MAJOR EMPLOYERS

Business	
Product or Service	Employees
Citigroup	
Financial Services	4,500
MasterCard International, Inc.	
Global Technology Headquarters	2,300
Fort Zumwalt School District	
Education	2,000
MEMC Electronic Materials, Inc.	
Silicon Wafer Manufacturing	1,270
True Manufacturing	
Freezers and Commercial Coolers	1,000
City of O'Fallon	
Municipal Services	350

O'Fallon Municipal Centre



True Fitness Technology, Inc.	
Treadmills	275

Xspedius	
Telecommunications Firm	260

Brake Resources & Braking Technology	
Brake Manufacturer for Automobiles	175

Synergetics	
Surgical Instruments & Supplies	165

Nordyne, Inc.	
Heating and Cooling Components	160

VSM Abrasives Corp.	
Abrasive Products	150

American Power Conversion	
Computer Software & Hardware	140

Mail-Well, Inc.	
Lithograph, Envelopes	135

O'Fallon Casting, LLC	
Nonferrous Investment Casting	115

Source: O'Fallon Economic Development Office

LABOR POOL

	County	Region
Total Size	156,972	1,332,253
Manufacturing	24,381	176,900
Unemployed	5,932	73,076
Unemployment Rate	3.8%	6.0%

Source: 2000 U.S. Census Bureau

Location & Transportation

O'FALLON IS WITHIN 500 MILES OF:

- 43% of U.S. population and households
- 40% of total U.S. personal income
- 39% of total U.S. retail sales
- 42% of total U.S. manufacturing shipments
- 49% of total U.S. manufacturing employment

ACCESS

O'Fallon covers 29 square miles and is accessible via Interstate 70 to the north and Interstate 64 to the south. State Route 79 and Highway K are the primary north-south thoroughfares. Other highways include Interstates 270 and 44 and State Route 94. O'Fallon is located at the center of St. Charles County, Missouri's fastest-growing county.

AIR

- Lambert International Airport**
- Just 14 miles east
- Passenger air cargo, non-stop to most U.S. cities
- More than 12 airlines, including American and Southwest

Spirit of St. Louis Airport

- Just minutes away in Chesterfield
- A 7,500-foot runway, full instrument landing systems

Other Airports

Three airports within the county serve private and corporate aircraft, with an average runway length of 3,500 feet. All fields are paved and illuminated.

TRUCK

Six terminals: Heartland Express, Distribution Transportation Services, R.L. Smith, Roadway, Stege and S&H

RAIL

Norfolk & Southern Railroad, main line available to most industrial sites

Tax Rates

CITY OF O'FALLON

PROPERTY TAX RATES, 2004

Per \$100 Assessed Valuation

Direct and Overlapping Governments

Taxing Authority	Rate
City of O'Fallon82
General	0.375
Parks	0.135
Debt Service	0.31
State of Missouri03
St. Charles County01
St. Charles County Road and Bridge23
Fort Zumwalt School District	4.9538
St. Charles County Library District22
O'Fallon Fire Protection District63
St. Charles County Handicapped14
St. Charles County Ambulance15
St. Charles County Alarm and Dispatch04
St. Charles Community College23
TOTAL	7.45

Source: St. Charles County Collector's Office

SALES TAX RATES

State	4.0
Conservation	0.125
Parks and Soil	0.1
County	1.0
City Sale	1.0
City Transportation	0.5
County Transportation	0.6
TOTAL	7.325%

Utilities

TELEPHONE/COMMUNICATIONS

CenturyTel	800-201-4099
• Primary telecommunications provider; business and residential	
Charter Communications	636-379-5477
• Services include digital cable, telephone and high-speed Internet	
SBC	800-499-7928
• Serves southern portions of O'Fallon with fiber optic cable	
• High-speed data transfer, Internet, telecommuting, on-demand videoconferencing	

ELECTRIC

Ameren Corporation	800-552-7583
--------------------------	--------------

WATER/SEWER

Water/East of Hwy. K	
Missouri-American Water	636-922-9164
Water/Sewer North of Mexico:	
O'Fallon Water & Sewer	636-281-2858
Water/Sewer South of Mexico:	
Duckett Creek Sanitary District	636-447-4944
Public Water District #2	636-561-3737

GAS

Laclede Gas	800-887-4173
-------------------	--------------

IMPORTANT NUMBERS

Chamber of Commerce	636-240-1818
City Hall	636-240-2000
Fire Department	636-240-5312
License Bureau	636-281-0225
O'Fallon Business Association	800-960-4503
O'Fallon Waste & Recycling	636-379-5420
Police Department	636-240-3200
Post Office	800-275-8777

Area Parks

The city and county parks in and around O'Fallon are great venues for family fun. Civic Park, Dames Park, Fort Zumwalt Park, Sports Park I & II, Westhoff Memorial Park and the newly constructed Renaud Spirit Center are pivotal points for some serious fun.

Civic Park, O'Fallon's oldest, offers 20 possibility-packed acres. The recently rejuvenated Alligator's Creek Aquatic Center provides summer relief for kids and grown-ups alike, with two swimming pools, two water slides and all kinds of family-style fun. The park offers rental opportunities for the whole family for special occasions, four horseshoe pits, two pavilions and two large play structures. The O'Fallon Historical Society offers tours of the Log Cabin Museum on the park grounds. Additionally, Civic Park hosts the Spring Gateway Car Show, Summer Concerts in the Park, Summer Day Camp, the Fall Festival & Craft Bazaar, and a host of other special events.

Dames Park offers 63 acres of fun, with three natural stone and metal pavilions, three playground areas with cork-based surfaces, football fields, soccer fields, nicely landscaped areas, handicapped parking, and side-by-side barbecue grills.

O'Fallon Sports Park I & II consists of 93 acres, including 13 regulation-size soccer fields. This complex offers choices for the active family and is complete with restrooms, concessions, two pavilions, a children's garden and two play structures. The new **Renaud Spirit Center** is located in O'Fallon Sports Park and expands the leisure choices for the busy family. It includes a highly interactive indoor aquatic center featuring a three-story waterslide, a gymnasium with two regulation-size basketball courts, a 1,800-square-foot aerobic studio, a 6,200-square-foot fitness center, an elevated walking track with outstanding vistas overlooking the aquatic center, a gymnasium and entry commons, several multipurpose classrooms, and an arts and crafts studio. The center's floor plan allows even more growth in the future, including room for an

expanded gymnasium and outdoor aquatic facilities. If your family is interested in indoor or outdoor recreational activities or just a fun day in the water, O'Fallon's Sports Park is the place.

Westhoff Memorial Park is the largest park in O'Fallon, offering 65 acres of leisurely or active recreation. The Ozzie Smith Sports Complex in Westhoff Park offers seven lighted championship-quality ball fields; these are just half of the 14 fields that are available for baseball or softball enthusiasts. Home of the O'Fallon Heritage and Freedom Fest, Westhoff Memorial Park also offers two sand volleyball courts, an outdoor basketball court, eight lighted horseshoe pits, three lighted tennis courts, two playgrounds, a skating area, peewee fields and a pavilion.

For a change of pace, **Fort Zumwalt Park** offers a quiet retreat with 48 mostly wooded acres, hiking trails, playgrounds and a pavilion. If you enjoy fishing, visit 4-acre Lake Whetsel and try your hand at catching one of the many crappie or small-mouth bass that populate this lake. An old stone chimney marks the spot of the former Fort Zumwalt (circa 1812), said to have been visited by Daniel Boone. The park also includes the recently restored, historic Darius Heald Home, built circa 1886. Fort Zumwalt Park also hosts nearly 10,000 visitors during the Celebration of Lights in the Christmas season — the largest holiday light display in St. Charles County.

PARKS AND RECREATION

Play Time!



Your Recreation Destination is the **RENAUD SPIRIT CENTER**



6,200 Square Feet of Fitness

- Free Weights
- Cardio Equipment
- Circuit Equipment

Walking / Jogging Track

Interactive Family Aquatics Center

- Lap Lanes, Slide, Lazy River

Double Gymnasium

Kids' Korner

Convenient Hours

Professional Staff

Safe, Friendly Environment

Annual Passes

Daily Admissions

Corporate Rates

Residents and Non-Residents

Welcome!

Comprehensive Programs

for ALL Ages!



For more information, call (636) 474-2REC.

www.renaudspiritcenter.com

The O'Fallon Parks and Recreation Department

In addition to administering the city's park facilities, the Parks and Recreation Department offers programs for children and adults. A variety of children's clinics on topics including tumbling, ballet, jazz dancing, karate, musical instruments and nature, among others, keep the kids occupied — in constructive ways — during the long summer months. Summer camps covering a variety of interests, including extreme sports, theater, and arts and crafts, are a great way for kids of all ages to have fun and make new friends, while mom and dad can enjoy Parents' Nights Out, when they can drop their kids off for supervised activities while they paint the town.

Adults and kids can take part in league sports: softball for the grown-ups and T-ball, soccer, basketball and more for the kids. And residents of all ages enjoy a full aquatics program, with both group and private lessons, swim team, diving, pool parties, special programs for kids, lifeguard training, and more.

The O'Fallon Cultural Arts Center offers classes and monthly exhibits in the historic Krekel Depot, in Civic Park. Classes and workshops are taught by professionals and city staff and include such topics as photography, watercolor painting, drawing, scrapbooking and sculpting, among others. And each month, new exhibits of sculpture, paintings, photographs, pottery and other media are displayed at the Cultural Arts Center.

The Parks and Recreation Department offers even more original and outstanding programs, including trips, lectures, social dancing, fencing, fitness — there's just too much to list here! For more information on these or other programs, visit www.ofallon.mo.us or www.renaudspiritcenter.com.

St. Charles County Parks

St. Charles County has five parks open to the public, and three more are planned, continuing an ongoing commitment to acquiring and preserving natural park land.

Klondike Park, the county's newest, encompasses 250 acres of land that was once heavily quarried. Located in southwest St. Charles County near Augusta, the park's historical significance and proximity to the Katy Trail make it a unique addition to the county parks system. Recreational opportunities in the park include fishing, camping (both primitive and camper cabins), picnic pavilions, a playground, scenic overlooks, hike/bike trails and a conference center that is available to rent for meetings and special occasions.

Quail Ridge is another popular choice for county residents. Its convenient location at the intersection of Interstate 70 and Highway 40/61 makes it popular for weddings and family reunions. Also consisting of 250 acres, Quail Ridge offers fishing; hike/bike trails; picnic pavilions; a disc golf course; a 1.5-acre, off-leash dog park; and The Lodge, which is available to rent for weddings and special occasions. The dog park has been especially popular, since it is the only park of its kind in the entire county.



Bear Creek Golf Course is an 18-hole course designed by Gary Kern.

The Youth Activity Park is partially open at this time. The county opened the skate park portion before the rest of the park was complete to provide youth ages 12 to 18 with a place to safely rollerblade and skateboard. The rest of the park will open in late 2004. The park will remain specially for youth ages 12 to 18. Age restrictions are carefully enforced as a way to keep the park safe for children.

Matson Hill was the first of the county parks to be opened to the public (in 2001). It consists of 67 acres and is mainly used for its hike/bike trails. The park is popular with local off-road cyclists and hikers.

Hideaway Harbor Park is 48 acres and provides beautiful views across the river. It also provides a boat ramp.

Play Ball!

In 1999, the **River City Rascals** joined the Frontier League in T.R. Hughes Ballpark, one of the first parks built specifically for Frontier League play. An exciting new park with old-style ambiance, T.R. Hughes Ballpark is located in the Ozzie Smith Sports Complex in St. Charles County. During the team's first year, the River City Rascals led the Frontier League in attendance with an unparalleled 151,000 fans.

The Frontier League has brought professional baseball to smaller markets, offering a level of play and talent that has drawn national attention. Although the Frontier League is not associated with Major League Baseball, several Frontier League players — including the St. Louis

Cardinals' Jason Simontacchi — have joined Major League teams, so there's a chance you may be watching a future all-star or hall of famer. Additionally, an influx of former Major League players into the Frontier League as coaches, managers and staff continuously elevates the level of play.

T.R. Hughes Ballpark has nearly 3,000 seats, a grass berm and a picnic area that accommodates another 2,200 ball fans. In just five years, the River City Rascals have amassed a loyal, enthusiastic fan base in the area — come on out to the ball game, and join the fun!

Tee Time

Avid golfers who appreciate lush fairways, manicured greens, scenic views and challenging courses will find all that and more in the O'Fallon area.

The Falls Golf Club, in O'Fallon, is a spectacular 18-hole, 6,400-yard golf course blending creative landscaping with natural beauty. It features mature trees, tranquil lakes, six waterfalls, and creeks that wind their way around the holes, grass and sand bunkers on this world-class golf course.

WingHaven Country Club, in O'Fallon, is one of the Midwest's premier layouts, the creation of renowned course designer Steve Nicklaus, son of legendary golfer Jack Nicklaus. Dramatic greens, vistas and mounds line the fairways. It's 7,230 yards from the tips, so this 18-hole course will challenge golfers at every level. WingHaven is designed

MANPOWER

**MANPOWER
EMPLOYMENT SERVICE**



318 D Mid Rivers Mall Dr.
St. Peters, MO 63376
636-397-5660 phone
636-397-5668 fax
www.us.manpower.com

St. Charles County
your BUSINESS & LEGAL news
St. Charles County
Business Record
On-Line & Print Subscriptions
636.949.6928
www.SCCBR.com
INFO@SCCBR.COM

Gateway Sign Design
Gatewaysign@charter.net
25 Amber Meadows Dr. O'Fallon, MO 63366
636-379-7446
636-294-7410 Fax
We offer a wide range of services...
Banners • Decals • Auto Boat Graphics • Real Estate & Site Signs
Sand Carving • Digital Full Color Graphics
Apparel • Promotional Items & Back-Lit Signs

to host professional tours and includes a distinctive clubhouse and pro-caliber amenities at the Wing-Haven Country Club.

Bear Creek in Wentzville is another world-class 18-hole course, this one the brainchild of celebrated designer Gary Kern. Bear Creek features many remarkable holes. The par-four second and fifth holes, as well as the 18th hole, are notoriously demanding. The course plays across a lake to a landing area with two deep bunkers to the right and the left, and a wooded creek side on the left.

Whitmoor County Club, in St. Charles County, includes 36 holes of gently rolling hills, dense forest lands, manicured zoysia fairways and velvety greens offering a picturesque scene unlike any in the area. With an array of strategically placed bunkers and 25 acres of lakes, the courses are not only panoramic, but challenging as well. Designed in conjunction with a 600-acre, upscale residential community, Whitmoor Country Club offers all of the amenities that one could desire from a private club.

Golf Headquarters Family Golfplex, along Highway K in O'Fallon, features an expansive range with mat and natural hitting stations, a pitch and putt course, miniature golf, and a pro shop. *Golf Range Magazine* recently listed Golf Headquarters' Family GolfPlex among the nation's top 100 practice facilities.

Pheasant Run, a beautiful 18-hole, public golf course, is the area's most recent addition. If you can't get in a game before dark, don't worry — this course has lights, allowing golf enthusiasts to play at night.

Fun and Festivals

O'Fallon Heritage and Freedom Fest, the city's annual 4th of July celebration, is the second-largest in Missouri, offering family entertainment galore, with a parade, live music, a carnival and booths, crafts, kids activities, a car show, and a petting zoo. The two-day event, typically held July 3 and 4, is capped each evening with a glorious fireworks show. The main stage always features top-notch popular entertainment, including recent performances by the Village People, Charlie Daniels, BTO, KC & The Sunshine Band, and many others.

O'Fallon's annual **Fall Festival & Craft Bazaar** in October brings crafters from miles around to display their handiwork. Along with the crafts, enjoy musical entertainment and other activities, or sample the variety of delectable choices from the food booths.

During the holiday season, residents of O'Fallon and City staff come together to create the largest Christmas light display in St. Charles County — the **Celebration of Lights**. Touring the display has become a tradition with most residents, as the

magnificent celebration transforms Fort Zumwalt Park into a winter wonderland during the months of November and December. The display, which is more than a mile long, boasts 50 scenes and more than a million lights. You can drive through the display or take advantage of Walk-Through Night, when you can stroll at your leisure and view the displays as long as you like.

Veterans Memorial Walk

The O'Fallon Veterans Memorial Walk, at the corner of Veterans Memorial Parkway and Belleau Creek Road, honors all U.S. military personnel as well as American veterans of all eras. The memorial was built by the City of O'Fallon with the assistance of local veterans organizations. No other monument in the United States is quite like the Walk. It is the only memorial in the United States that invites bystanders to march in the footsteps of the men and women who serve, or who have served, our country.

Front and center at the memorial are 64 pairs of bronze military boots. Each pair in the platoon of boots is positioned as though marching in unison, left foot forward. As a reminder that some American soldiers remain missing in the field, a single pair of boots is separated from the platoon; these boots have been placed at the foot of the POW/MIA flag.

Rising behind the platoon of marching boots are five towering monoliths, each bearing a bronze medallion from one of the five branches of the U.S. Armed Forces. American military flags placed along the perimeter instill a sense of honor and ceremony. An eternal flame was unveiled and lit at the site on September 19, 2003, and a reflecting pool adds a feeling of peace.

The O'Fallon Veterans Memorial Walk is lighted and open 24 hours daily. All are welcome. Each year, Armed Forces Day and Memorial Day services are held in May, POW/MIA Remembrance Day is observed in September, and Veterans Day ceremonies are held in November.

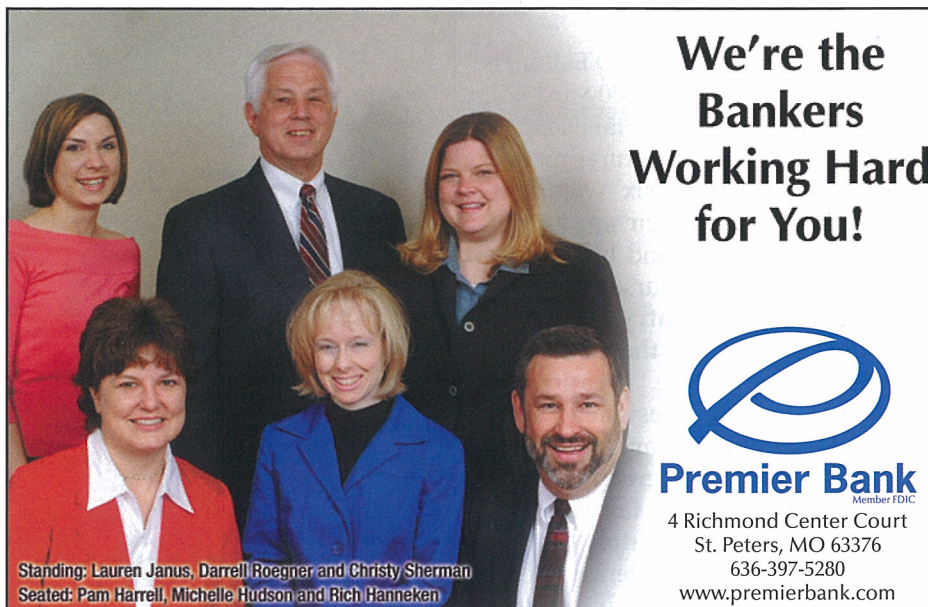
**We're the
Bankers
Working Hard
for You!**



Premier Bank
Member FDIC

4 Richmond Center Court
St. Peters, MO 63376
636-397-5280

www.premierbank.com



Standing: Lauren Janus, Darrell Roegner and Christy Sherman
Seated: Pam Harrell, Michelle Hudson and Rich Hanneken

AREA ATTRACTIONS

Located in a former train car factory, the **Foundry Art Centre** in St. Charles provides artists with an outlet to create and display their artwork and visitors with the opportunity to purchase their one-of-a-kind pieces. With a Grand Hall and Smithsonian-caliber exhibition space, lovers of the visual and performing arts will enjoy this new regional attraction.

Just a short drive south on scenic State Highway 94 in St. Charles County is **Missouri Wine Country**. This area is popular with the locals. With several wineries to choose from, visitors can pack a picnic and enjoy some of Missouri's most popular wines while listening to local jazz combos on outdoor patios.

For wild and inexpensive — free, in fact — fun, visit the **St. Louis Zoo**. A recent *Zagat* survey ranked it the number-one zoo/animal park in the nation. Popular exhibits include The River's Edge, a multi-species immersion exhibit, and Puffin and Penguin Coast.

Grant's Farm, once owned by Ulysses S. Grant, is now the Busch family estate. A visit is free, compliments of Anheuser-Busch, Inc. You'll see animal shows and a petting zoo, and you can take a train ride through a wildlife preserve.

The **St. Louis Science Center** is another admission-free adventure. Hands-on learning and interesting exhibits appeal to kids and adults alike. Learn about volcanoes, tornadoes, earthquakes, dinosaurs and more. The Planetarium, which is among the nation's top space-education centers, offers an out-of-this-world adventure for a small admission fee.

The **Gateway Arch** in St. Louis is an architectural marvel and a stunning tribute to westward pioneers. It is the tallest man-made monument in the United States. Visitors can ride to the top, where there's a stunning Mississippi River view, a museum

and the new 7-mm World Odyssey Theatre, with films on a screen that's four stories tall!

Sports fans can have professional-level fun following the championship-caliber play of the St. Louis Cardinals, St. Louis Rams or St. Louis Blues. The **St. Louis Cardinals'** current roster features a group of perennial All Stars, Gold Glovers and future hall of famers, including Albert Pujols, Scott Rolen, Jim Edmonds and Edgar Renteria. Known as "The Best Fans in Baseball," Cardinal fans flock to Busch Stadium, which often leads the league in attendance, routinely drawing more than 3 million fans. In a few short years the Cardinals will open a brand new stadium in St. Louis that's sure to feature a variety of fun sites for the whole family alongside the best baseball in the Major Leagues.

Although relatively new to the region, the **St. Louis Rams** have a huge fan base who have enjoyed the team's high-flying offense — "The Greatest Show on Turf" — which has garnered, in recent years, a long list of wins and the team's first Super Bowl championship.

The **St. Louis Blues** have given fans the longest-running playoff-appearance streak in professional sports — reaching the playoffs a remarkable 24 times in a row — and counting. Each year, hockey enthusiasts in the region know they're going to see a quality team on the ice at the Savvis Center.

Residents can find more sporting and other attractions at **The Family Arena** in St. Charles, where the **Missouri River Otters** play minor league hockey. Local fans also follow the **Show Me Believers**, a National Indoor Football League franchise. The **St. Louis Steamers**, a World Indoor Soccer League expansion franchise, show off their skills at the Savvis Center. These soccer pros kick around in a new, state-of-the-art facility.

For those seeking a total entertainment experience, **Ameristar Casino St. Charles** offers a 130,000-square-foot casino with 3,300 slot and video poker machines and 95 table games, including a live poker room, seven dining and entertainment venues, a retail gift shop, and a video game arcade.

Good Times Are Always Close at Hand



AREA ATTRACTIONS

CONTACT INFORMATION

America's Center

314-421-1023

www.americascenter.org**Ameristar Casino — St. Charles**

636-940-4300

www.ameristarcasinos.com**Anheuser-Busch Brewery Tours**

314-577-2626

www.budweisertours.com**Butterfly House**

636-530-0076

www.butterflyhouse.org**Cahokia Mounds****State Historic Site**

618-346-5160

www.cahokiamounds.com**Cathedral Basilica of Saint Louis**

314-373-8240

www.cathedralstl.org**Challenger Learning Center**

314-521-6205

www.clcstlouis.org**City Museum**

314-231-2489

www.citymuseum.org**Contemporary Art Museum St. Louis**

314-535-4660

www.contemporarystl.org**Creve Couer Park**

314-615-5000

www.stlouisco.com/parks/creve.html**Daniel Boone Home****& Boonesfield Village**

636-798-2005

www.lindenwood.edu**Eckert's Country Stores & Farms**

618-233-0513

www.eckerts.com**Edward "Ted" and Pat Jones —****Confluence Point State Park**

636-940-3325

<http://www.mostateparks.com/confluence.htm>**Fairmount Park**

618-345-4300

www.fairmountpark.com**The Family Arena**

636-896-4242

www.familyarena.com**First Missouri State****Capitol Historic Site**

636-940-3322

www.mostateparks.com/firstcapitol.htm**Forest Park**

314-289-5300

<http://stlouis.missouri.org/citygov/parks/forestpark>**Foundry Art Centre**

636-724-1052

www.foundryartcentre.org**Fox Theatre**

314-531-4833

www.fabulousfox.com**Gateway International Raceway**

618-482-2400

www.gatewayraceway.com**Grand Center**

314-533-1884

www.grandcenter.org**Grant's Farm**

314-843-1700

www.grantsfarm.com**Historic St. Charles**

636-946-7776

www.historicstcharles.com**Jefferson Barracks****National Cemetery**

314-260-8720

www.cem.va.gov/nchp/jeffersonbarracks.htm**Jewel Box at Forest Park**

314-531-0080

<http://stlouis.missouri.org/citygov/parks/jewelbox/>**Katy Trail State Park**www.mostateparks.com/katytrail/index.html**Laclede's Landing**

314-241-5875

www.lacledeslanding.com**Laumeier Sculpture Park**

314-821-1209

www.laumeier.org**Lewis & Clark Boat House
and Nature Center**

636-947-3199

www.lewisandclark.net**Carlson
Wagonlit**

Adventure Plus Travel, Inc.

429 West Terra Lane

O'Fallon, MO 63366

636.272.TOUR • 877.272.TOUR

Fax: 636.272.8688

adventureplus@carlsontravel.comwww.carlsontravel.com/ofallonTravel®
of O'FallonMANAGE YOUR
ACCOUNT ONLINEwww.ameren.com**Carriage
Printing**

636-978-1344

New Customers

Bring in this ad and receive
10% off your printing orders for 3 months.

The Magic House
314-822-8900
www.magichouse.org

Missouri Botanical Gardens
314-577-9400
www.mobot.org

**Missouri Department of
Conservation (Busch Wildlife)**
636-441-4554
[www.conservation.state.mo.us/
areas/cnc/busch/](http://www.conservation.state.mo.us/areas/cnc/busch/)

Missouri History Museum
314-746-4599
www.mohistory.org

Missouri River Otters
636-896-4200
www.riverotters.com

Missouri Wine Country
www.missouriwine.org

Muny at Forest Park
314-361-1900
www.muny.com

O'Fallon Tourism & Festivals
636-379-5502
www.ofallon.mo.us

Old Court House (St. Louis)
www.nps.gov/jeff
314-655-1700

Purina Farms Visitors Center
314-982-3232
www.purina.com

River City Rascals
T.R. Hughes Stadium
636-240-2287
www.rivercityrascals.com

Show Me Believers
636-916-0132
www.showmebelievers.com

Six Flags St. Louis
636-938-4800
www.sixflags.com

St. Charles Convention Center
636-946-7776
www.historicstcharles.com

St. Louis Art Museum
314-721-0072
www.slam.org

St. Louis Blues
314-622-2500
www.stlouisblues.com

Savvis Center
314-622-5400
www.savviscenter.net

St. Louis Cardinals
314-421-3060
www.stlcardinals.com

Busch Stadium
312-356-4700
www.buschstadium.com

St. Louis Gateway Arch
877-982-1410
www.gatewayarch.com

St. Louis Mills
314-227-5555
www.stlouismills.com

St. Louis Rams
314-425-8830
www.stlouisrams.com

Edward Jones Dome
314-342-5036
www.edwardjonesdome.com

St. Louis Science Center
314-289-4400
www.slsc.org

St. Louis Steamers
www.stlsteamers.com

St. Louis Symphony Orchestra
314-533-2500
www.slso.org

St. Louis Union Station
314-421-6655
www.stlouisunionstation.com

St. Louis Zoo
314-781-0900
www.stlzoo.org

Steinberg Rink
314-367-7465
[http://stlouis.missouri.org/citygov/
parks/forestpark/steinberg.html](http://stlouis.missouri.org/citygov/parks/forestpark/steinberg.html)

UMB Bank Pavilion
314-298-9944
www.umbbankpavilion.com

University City Loop
314-727-8000
www.ucityloop.com

**Washington Avenue
(Downtown Now)**
314-588-0458
[http://stlouis.missouri.org/development/
washingtonave/home.html](http://stlouis.missouri.org/development/washingtonave/home.html)

West Port Plaza
314-576-7100
www.westportstl.com

World Bird Sanctuary
636-225-4390
www.worldbirdsanctuary.org

O'Fallon Garage

Complete Auto Repair
Complete Transmission Repair
Exhaust • Air Conditioning
Wrecker Service



Suspension • Tune-Ups • Brakes • Shocks

272-3232 or 240-4400

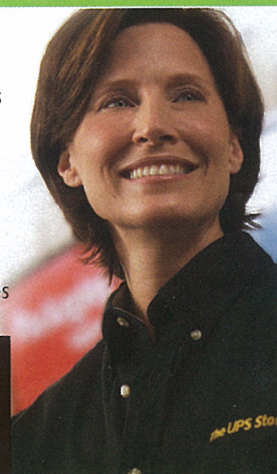
203 S. Main • O'Fallon, MO



Multi-tasking doesn't have to mean multiple locations.

Let us help you with that.

Shipping Services
Packaging Services
Mailbox
& Postal Services
Copying Services
Finishing
& Printing Services



The UPS Store®

The UPS Store

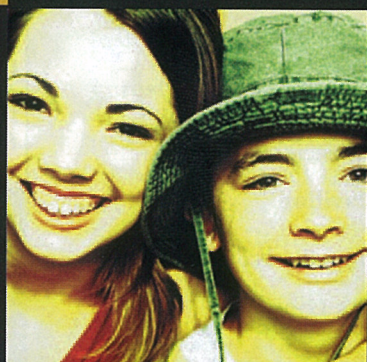
Phone 636.379.5330

2977 Highway K
O'Fallon, MO 63366
Mon – Fri 8am – 7pm • Sat 9am – 4pm

©2003 United Parcel Service of America, Inc.



IT'S ALL ABOUT YOU
at Dantage



How can you expect to be treated at Vantage Credit Union? It's like when your friends surprise you on your birthday. Or when you land a great client and the boss takes you out to celebrate. It's all about **YOU**.

When you join Vantage, you become a member-owner, which means **YOU** own a piece of the credit union. Really. And as a member-owner, you enjoy the kind of personal attention you just don't get elsewhere. Not to mention that the credit union's surplus earnings are returned right back to **YOU**—in the form of a cash dividend, lower rates on loans, better savings yields, and all the low- and no-cost convenience services you expect from a progressive, full-service financial institution.

GO BANKLESS!®

Make the switch to Vantage Credit Union.

- Free checking
- Free online banking
- Competitive savings
- Low-rate loans
- Free Direct Deposit
- Investment services
- Retirement accounts
- And much more!

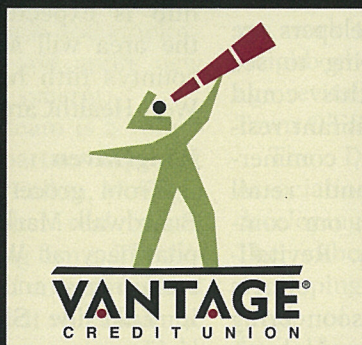


29 O'Fallon Square

**New branch also coming soon
near HWY 40 and K!**

314.298.0055 • 800.522.6009

www.vcu.com



NCUA
National Credit Union Administration

Membership required. Visit www.vcu.com for membership eligibility.

DINING AND SHOPPING

Time to Enjoy

In O'Fallon, choose from a full menu of dining options, from outdoor patio dining to family-style buffets, from comfort-food grills to gourmet fare. There's plenty of international flavor, too, from stir-fried Szechuan to hotly curried Thai, from chili con carne to bisque sans escargot, and from fettuccini alfredo to Irish Guinness stew.

The choices are endless, whether you want to splurge a little, take your time, eat in a flash or save a dime. Try veggie-stuffed wraps or buffalo wings, expertly prepared ribs, or juicy burgers and fries. Finish a meal or a

day with a double cheesecake and a triple espresso. Whatever you're in the mood for, you're likely to find it here!

Nonstop Shopping

Shopping experiences range from leisurely antique shops to nearby shopping malls, and from local markets to high-end specialty stores offering fine art, fun fashion, functional furniture and more.

Take a break from shopping to get your hair styled at a fine salon or a practical barbershop. Fido can get a new do, too! There's a puppy pet spa where they'll pamper and primp your favorite canine.

In the past few years, several strip malls and shopping centers have opened along Highway K and other areas in O'Fallon, and more are under construction. In May 2004, it was announced that a new shopping center anchored by a 14-screen movie theatre will be built on Highway 40 across from WingHaven.

Downtown Style in Old Town

You'll find many community mainstays in Old Town, including the O'Fallon Municipal Centre, O'Fallon Plaza, the post office, school district offices and plenty of shops, restaurants, banks and businesses.

Developers are beginning to see how this could be a vibrant residential, commercial and retail area in our community. Revitalization efforts could soon bring additional businesses to this part of town.

Highway K

There may be no region of the city that epitomizes O'Fallon's explosive growth better than the Highway K corridor, south of Interstate 70. Once a winding rural highway bare of development, the Highway K area has burgeoned into one of the city's most popular commercial and residential districts.

Highway K has been rebuilt and widened, becoming one of the busiest thoroughfares in the county. Commercial enterprises have been quick to capitalize on the area's phenomenal growth and popularity, and new construction is everywhere, including shops, restaurants, hotels and more. With an amazing array of local and



Lakeside Shoppes

national chain choices, Highway K is the place to go for power shoppers, diners and O'Fallon's ever-growing number of visitors, who can enjoy the convenience of abundant shopping, lodging and dining with easy access to the Interstate. Indeed, much of Highway K's growth has occurred concurrently with O'Fallon's growing reputation not only as a base for exploring the region, but as a destination in itself.

Highway K's status as O'Fallon's hottest commercial and residential hub is expected to continue, and the area will soon be home to the county's fifth hospital, BJC Progress West HealthCare Center.

WingHaven

From groceries and a library at Boardwalk Marketplace, to toys and a pharmacy at WingHaven Centre, to restaurants and interior decorating in Lakeside Shoppes, many more businesses can be found throughout the WingHaven Development.



Open Daily

PIZZA DEN

128 Triad West Drive
(On Mexico Rd. 1 Mile West of Hwy K)
Outside St. Charles, Call 636-379-0796
or Fax 636-240-4490
Dine In • Carry Out • Delivery
www.fortelspizzaden.com

Phone Ahead - 636-272-8300

Mon - Thurs.....	11:00 am - 10:00 pm
Fri - Sat.....	11:00 am - 11:00 pm
Sun.....	3:00 pm - 10:00 pm



*Aggie's Closet
& Tea Room*

*A casual ambiance with the elegant flavor
of china, linen and Victorian decor*

- Dress-up Birthday Parties
- Showers
- Luncheons
- Small Intimate Weddings
- Private Parties
- Sunday Brunch
- Monthly High Tea

Open for Lunch: Tues-Sat, 11-2:30
Sundays and evenings by reservation groups of 15 or more
9036 Veterans Memorial Pkwy.
O'Fallon, MO 63366
636-379-6878

There are many housing communities here, from spacious suburbs and waterfront subdivisions to urban row houses and on-the-grow downtown neighborhoods. Here is just a sampling of the many options available.

WingHaven — The Future Is Here

WingHaven is a premier multi-village, multi-faceted housing concept. Step into the charm of Boardwalk Square, take in the view from Boardwalk Towers, settle into Suncrest Village, or, if you want to improve your swing, look into Bayhill's golf course lots. The multiple villages of WingHaven offer homes in a full range of prices and styles, from neo-traditional to classic row houses.

Nearby, corporate facilities are developed among park-like natural areas. WingHaven offers more than a home — it incorporates a lifestyle. It's a city within a city, with beautiful views and more amenities than you can count, but without the need for long commutes.

WingHaven, located in O'Fallon near Highway 40 and Interstate 70, is an innovative, all-in-one housing and business development on 1,200 beautiful acres of land. It's home to thousands of residents and businesses, including MasterCard's Global Technology headquarters.

O'Fallon-based McEagle Development calls the plan *LifeWorks*. The basic idea is that life works better when you can live, learn, work and play in one community. The community's home, business and information network eliminates long commutes for workers and addresses the needs of the new digital and knowledge economy. It helps people and employers create, transmit and apply new knowledge with great synergy.

The development team is a voluntary public/private partnership that includes the City of O'Fallon, McEagle Development and other real estate, design and engineering firms. The 10-year plan is about half completed and is progressing rapidly. It will continue to expand high-tech research and laboratory space alongside retail and commercial space; in addition to its



NEIGHBORHOODS

many homes and apartments, entertainment and recreational attractions, retail shops, and restaurants will also be included. It will have homes for renters, first-time buyers, established homeowners and retirees.

Housing options run the gamut from large, single-family homes to duplexes, condominiums and apartments. The development's neighborhoods — or villages — include parks, walking trails and access to roads, schools and shopping. Its aesthetic appeal is further enhanced by the fact that no cables, wires or power lines are visible — they're all underground. Residents enjoy the nature trails and parks, and to maintain the park-like appeal, about 40 percent of WingHaven is set aside as natural green space.

O'Fallon's Old Town

Several homeowners and businesses work together in the Downtown Neighborhood Association to encourage revitalization and growth in Old Town O'Fallon.

The Downtown Neighborhood Association was given the task of developing a vision for Old Town. The subcommittee assigned with developing the vision is made up of a group of citizens representing the four aldermanic wards, area residents and business owners. Information gained from this group, as well as

A Place in Time

Like a good
neighbor,
State Farm is there.®



statefarm.com™

State Farm Insurance Companies Home Offices: Bloomington, Illinois

636-379-8500

Hwy K&N - O'Fallon Office



**COLDWELL
BANKER**

GUNDAKER

2 Crossroads Plaza
O'Fallon, MO 63366

www.cbGundaker.com

general public comments and input, guide the committee.

Recently, there has been a lot of interest from developers wishing to redevelop areas in Old Town O'Fallon and preserve O'Fallon's history. With Main Street as a major north-south arterial road, developers are beginning to see how this could be a vibrant residential, commercial and retail area in our community. It is the hope of many community leaders that a large piece of property, which has been vacant for years, will be the catalyst that will spur the redevelopment of Old Town.

The Downtown Neighborhood Association and the City's Economic Development Department are working together toward the revitalization of the downtown area and the creation of positive growth and development.

Other Places to Call Home

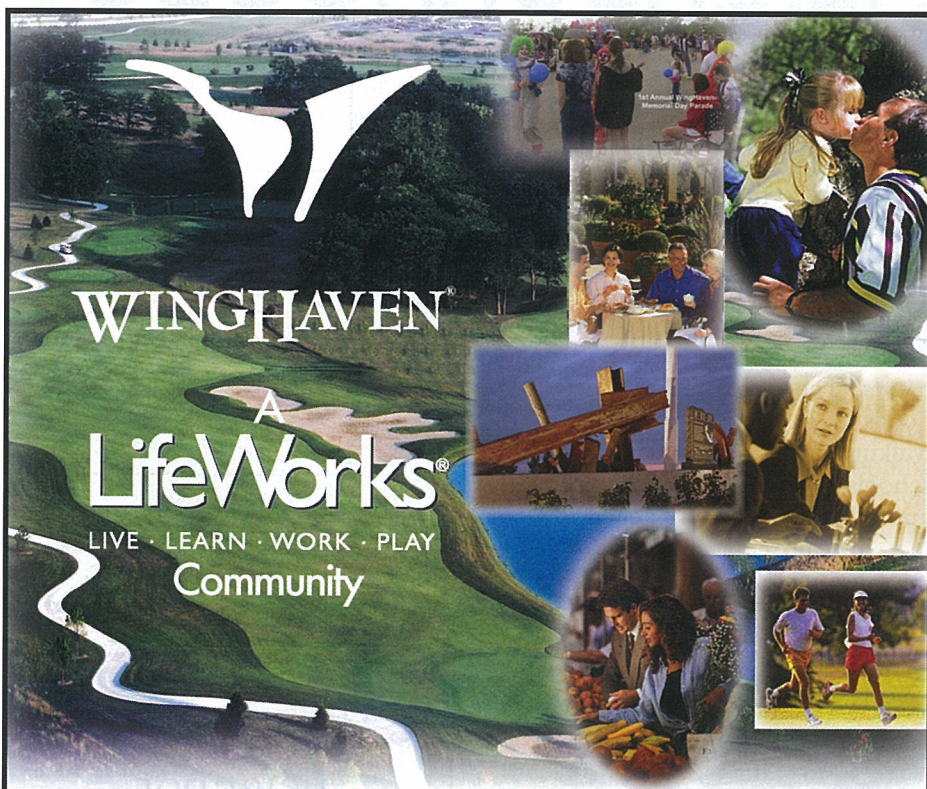
There are still more developments in O'Fallon, with homes for every lifestyle and price range. **BaratHaven** is a development located just east of WingHaven. **Homefield Gardens** features affordable, low-maintenance living and charming cottage homes.

Brownstone Village at Thornbury features classic row homes; **Westbury/Eastbury Village** and **Chantry Village at Thornbury** offer many more attractive options.

Nine additional northside developments offer fine living, too, from **Homefield** and **Hyland Green** to **Manors at Deer Creek**, **The Crossings** and **Waldon Pond Villas**.

Time to Shine

St. Charles County has been leading the region in housing starts since 1995 and has accounted for 40 percent or more of the total number of homes built in the region for the past four years (*St. Louis Business Journal*: Jan. 24, 2003; Oct. 31, 2003). As more and more people choose to live and work in St. Charles County and the City of O'Fallon, this phenomenal construction rate is expected to continue on pace — currently close to 4,000 homes are constructed annually county-wide — leading to a wide variety of homes for sale in the local market.



Elements of a LifeWorks® Community

Add "**Live** and **Play**" to "**Learn** and **Work**"

Live - Traditional and multi-family housing; hotel and conference facilities

Learn - Webster University, training facilities, elementary schools and daycare

Work - Over 2 million s.f. of office space - home to MasterCard Global Headquarters

Play - Golf, full-service Clubhouse, jogging trails, playgrounds and social events

DEVELOPED BY:

MCEAGLE

FOR MORE INFORMATION, VISIT OUR WEB SITE AT www.winghaven.net

EDUCATION

A Time to Learn

Three Triple-A rated schools and a full spectrum of learning opportunities are here to serve everyone from preschoolers, to grad students, to employees and others who want to expand their horizons.

There are two- and four-year colleges, technical schools, continuing-education programs and distance-learning programs. Several day care and preschool options provide care and early childhood education for children during their formative years.

The Fort Zumwalt School District

The Fort Zumwalt School District has over 18,000 students enrolled in grades K-12 in 15 elementary schools, four middle schools and three high schools; the district also features an alternative high school. This makes Fort Zumwalt one of the fastest-growing districts in the St. Louis Metropolitan Area and the ninth-largest in the state of Missouri.

The mission of the Fort Zumwalt School District is to assure that its students, regardless of ability or economic level, are provided an education in such a positive and safe learning environment that all reach their potential. A strong commitment is made to promote the virtues of democracy, citizenship, self-discipline, good work ethics and the need to respect all members of society.

An accelerated education program serves students in grades one through eight. Students at the high schools have an opportunity to select college credit courses in the areas of language arts, math, science and social studies. The Fort Zumwalt School District was honored with the Distinction in Performance Award by the state's Department of Elementary and Secondary Education in 2002 and 2003.



Whatever your educational needs are, numerous possibilities exist in O'Fallon.

Day Care/Preschools

- Kids Choice Childcare Center
- Kids R Kids
- Goddard School
- Tutor Time Childcare/Learning Centers
- United Services
- Youth In Need Head Start

K-12 Schools

Public

- Fort Zumwalt School District
- Francis Howell School District
- Wentzville R-4 School District

Parochial Schools

- Academy of the Sacred Heart
- Assumption Parish
- Christian High School
- First Baptist Church of O'Fallon
- Immaculate Conception
- St. Dominic High School
- St. Joseph Parish

**START HERE.
GO ANYWHERE.™**

O'Fallon Campus

927 E. Terra Lane, O'Fallon, MO 63366

Computer Technology | Medical Office Assistant
Electrical Mechanic | Heating, Ventilation and
Air Conditioning Mechanic (HVAC)
Building Maintenance Mechanic



Start Here. Go Anywhere.™

636.978.7488 www.vatterott-college.edu

EACH OF THE FOLLOWING INSTITUTIONS HAS A SATELLITE CAMPUS IN O'FALLON

Lindenwood University — www.lindenwood.edu

- Independent Presbyterian comprehensive, founded 1827
- Degrees offered: bachelor's, master's, post-master's certificates
- 358-acre campus located in St. Charles
- Coeducational: 54 percent women, 46 percent men
- 2003/04: 4,446 undergraduate students, 87 percent full-time
- 47 percent of applicants admitted, 2003/04
- Costs (2003/04): Comprehensive fee \$17,050

Maryville University — www.maryville.edu

- Independent comprehensive, founded 1872
- Degrees offered: bachelor's, master's
- Suburban 130-acre campus
- Coeducational: 74 percent women, 26 percent men
- 2003/04: 2,710 undergraduate students, 57 percent full-time
- 76 percent of applicants admitted, 2003/04
- Costs (2003/04): Comprehensive fee \$22,090

Vatterott College — www.vatterott-college.edu

- Campuses in St. Ann, Sunset Hills and O'Fallon, Missouri
- Proprietary primarily two-year, founded 1969
- Degrees offered: diplomas, associate's, bachelor's
- Coeducational, 600 undergraduate students
- Flexible scheduling and hands-on training

St. Charles Community College — www.stchas.edu

- State-supported two-year, founded 1986, part of Missouri Coordinating Board for Higher Education
- Degrees offered: certificates and associate's
- 135-acre campus located in Cottleville
- Coeducational: 61 percent women, 39 percent men; 43 percent full-time students
- Noncompetitive entrance level: 100 percent of applicants admitted
- Tuition: Area residents: \$1,440 full-time, \$48 per semester hour part-time. State residents: \$2,040 full-time, \$68 per semester hour part-time. Non-residents: \$3,090 full-time, \$103 per semester hour part time

Webster University —

- www.webster.edu/multicampus/winghaven.html
- Independent comprehensive, founded 1915
- Degrees offered: bachelor's, master's, doctoral
- Suburban 47-acre campus
- Coeducational: 62 percent women, 38 percent men
- 2003/04: 3,458 undergraduate students, 69 percent full-time
- 58 percent of applicants admitted, 2003/04
- Costs (2003/04): Comprehensive fee \$21,848

Francis Howell School District

Upon hearing of Daniel Boone's intended exploration into the Missouri territory in 1797, the Howell family of North Carolina pressed forward ahead of this expedition and ultimately found their new home on the north bank of the Missouri river. In the fall of 1825, a son, Lewis Howell, opened the Lewis Howell Academy in his home on Howell's

Prairie, marking the true beginning of the Francis Howell School District.

Today, Francis Howell School District serves more than 26,000 students, beginning with the district's nationally recognized Early Childhood Program and reaching through grade 12. Francis Howell is an award-winning school district, receiving recognition, for the third year in a row in 2003, with the State

of Missouri's prestigious Distinction in Performance Award for academic excellence. The district achieved perfect scores on all 12 academic standards measured for this award.

The Francis Howell School District encompasses over 150 square miles in the southwest corner of St. Charles County and is one of the largest school districts in the State of Missouri.

The Wentzville R-IV School District

The Wentzville R-IV School District serves 8,000 K-12 students within a 25-square-mile area in western St. Charles County. The Board of Education strives to make enrollment a positive experience for all students and to meet the needs of all students with innovative programs such as the Career Planning Center, Individualized Learning Center and Vocational Education Program. These programs offer valuable experience to students who become more marketable when searching for employment or applying for colleges. The percentage of Wentzville students exceeding national averages on the ACT test has been well above statewide numbers for several years.

St. Charles City-County Library District

Your Answer Place....Anywhere/Anytime

Library Branches Located in the O'Fallon Area

MIDDENDORF-KREDELL
2750 Hwy. K
978-7926 or 978-7997

DEER RUN
1300 North Main
978-3251 or 978-3261

LIBRARY EXPRESS at WINGHAVEN®
7435 VILLAGE CENTER DR. (Boardwalk Market Place)
561-3385

Visit our website:
www.win.org/library

St. Charles City-County Library District
A Top Ten American Library
Just a Click Away! 24 Hours a Day!



If you need people for jobs or you are looking for a job yourself, you've come to the right place. Because at Adecco, we connect more than 4 million people to great jobs in 62 countries around the world. Temporary, full-time, anytime.

CONNECTING
people to jobs

Contact us:
St. Peters, MO
(636) 970-2100
Ask for Nancy Hough

Adecco
THE EMPLOYMENT PEOPLE

St. Charles City-County Library District

Anywhere, anytime, the St. Charles City-County Library District is "Your Answer Place!"

The library home page is where information about the library and from the Internet is organized for customers. Visit www.win.org/library for more information.

From the library home page, customers can access the online library catalog by clicking on the "Library Catalog" button. Customers can use the online catalog to renew and reserve materials, find out what they have checked out and any fines owed, check or cancel reserves, and search by title, subject or author.

A new feature of the online catalog is e-mail notice for reserves. When placing a reserve, customers are asked if they would like e-mail notification. By filling in their e-mail address, they will automatically be notified when their book arrives.

Check out the collection of more than 6,000 electronic books available to St. Charles City-County Library cardholders. At home, work or in the library, customers can access the eBook collection from the library's online catalog or by clicking on the "eBooks" button on the library homepage.

Want to get back into reading? Go to the Web site and join a free Online Book Club. There are 11 different clubs to choose from.

The Library District has purchased a \$319,000 library for your home, office, school or wherever you are. St. Charles City-County Library District cardholders have access 24 hours a day, seven days a week from anywhere in the world to thousands of up-to-date electronic resources. These products include information on business, genealogy, history, literature, current events,

magazines, newspapers and more. To access a product, choose "Electronic Resources" on the library district homepage.

Information on special library materials and services, including business services, nonprofit services, local history and genealogy, government documents, and a geographic information system, can also be found on the library homepage. Customers can click on the "What to Read" button to find library reading lists, readers' resources and recommended Internet sites. Kids can go to "Kids Click" for homework help, tips on what to read, fun and games, and more. There is also a special page featuring "cool links," programs and materials for young adults.

For information on these and other library services, stop by or call your local library, or visit the library Web site at www.win.org/library.

LIBRARY HOURS AND INFORMATION

Library Hours — All Branches

Monday–Thursday: 9 a.m.–9 p.m.
Friday and Saturday: 9 a.m.–6 p.m.
Sunday: 1–5 p.m.

Middendorf-Kredell Branch

2750 Highway K
636-978-7926 or 636-272-4999
Reference & TDD: 636-978-7997
Fax: 636-978-7998

Deer Run Branch

1300 North Main
636-978-3251 or 636-980-1332
Reference & TDD: 636-978-3261
Fax: 636-978-3209

*Extension Services/
Outreach to Institutions:*

1300 North Main
636-978-3251 or 636-980-1332

Library Express at WingHaven

7435 Village Center Drive
(In the Boardwalk Marketplace
in WingHaven)
636-561-3385
Fax: 636-561-3819

True Value

Anything to Help

**O'Fallon True Value
Hardware**

**921 Hwy. K
O'Fallon, MO 63366**

DONALD E. SCHAPPE

(636) 240-4875

(636) 272-7441

Fax (636) 978-5919

**"Building
Brighter
FUTURES
Together"**

St. Charles
COMMUNITY COLLEGE

636-922-8273

www.stchas.edu



HEALTH CARE

Round-the-Clock Access to State-of-the-Art Care



The 72-bed hospital will expand services to the area's growing population and promises to continue improving access to quality health care.

Experts estimate that the new hospital in southern St. Charles County will have a \$600 million impact on the county's economy. The hospital will provide emergency care, medical and surgical inpatient care, critical care, obstetrics, outpatient surgery, and diagnostic and imaging services.

For more information about BJC HealthCare or the new Progress West HealthCare Center, you can contact:

• Barnes-Jewish St. Peters Hospital: (636) 916-9000

SSM St. Joseph

SSM St. Joseph consists of three facilities with one mission: to reveal the healing presence of God through exceptional health care services. This leading health care organization serves the residents of O'Fallon and the surrounding region. No matter what your health care needs, SSM St. Joseph has them covered. This award-winning

O'Fallon is well served by several high-quality health care providers. Hundreds of physicians and specialists are available to deliver top-notch care to residents throughout the region. SSM Medical Group and BJC Health Care are two of the area's leading health care providers.

Other health care assets, such as St. Luke's Urgent Care facility, St. John's Mercy, and Barnes-Jewish St. Peters O'Fallon Medical Building provide consistent access to highly acclaimed physicians and premium-quality care.

BJC HealthCare

BJC HealthCare is one of the largest nonprofit health care providers in the nation. O'Fallon and regional residents are served via 13 hospitals and multiple health care facilities, including Barnes-Jewish St. Peters Hospital and Barnes-Jewish St. Peters O'Fallon Medical Building. Services include inpatient and outpatient care, primary care, community health and wellness, workplace health, home health, long-term care, and hospice care.

Barnes-Jewish St. Peters Hospital recently completed a three-year, \$21.6 million construction project to expand emergency, outpatient, diagnostic and women's

services. The comprehensive Cardiology Center expands diagnostic and rehabilitative services and includes a new vascular interventional center. The Outpatient Surgery Center includes four operating suites and is designed to make the surgical process more convenient and comfortable for patients while providing state-of-the-art diagnostic and surgical care.

BJC Progress

West HealthCare Center—O'Fallon

Plans are underway for a new, full-service hospital near the intersection of Highways 40 and K in O'Fallon, scheduled to open in 2006.

Iverson **Tomasino** *Eyecare*

Complete Professional Eyecare
Comprehensive Eye Exams
Treatment Of Eye Disease
Glaucoma • Cataracts
Diabetic Eye Exams
Contact Lens Specialists
Lasik • Refractive Surgery
Fashion Eyewear
24-Hour Emergency Service



Bob Iverson
Optician

Scott A. Tomasino, O.D.
Family Optometry

Robert G. Goerss, O.D.
Family Optometry

636-272-1444

302 E. Pitman, O'Fallon, MO 63366

organization has received a variety of honors.

- SSM Health Care was the first health care winner of the Malcolm Baldrige National Quality Award (MBNQA) established by Congress.
- SSM St. Joseph Hospital West has been designated as one of the 100 Top Hospitals in the country by Solucient,

which recognizes excellence in quality of care, efficiency of operations and sustainability of overall performance.

- SSM St. Joseph Health Center in St. Charles received the first MissouriPRO Quality Award for clinical excellence and commitment to quality improvement processes. The award is based on clinical data in areas that are especially important to senior health care.

For more information about SSM St. Joseph, you can contact:

- SSM St. Joseph Health Center: (636) 947-5000
- SSM St. Joseph Hospital West: (636) 625-5200
- SSM St. Joseph Medical Park: (636) 498-7800

bites, St. Luke's Urgent Care is open 8 a.m. to 8 p.m., seven days a week.

WingHaven is home to both primary care physicians and specialists who handle diagnosis, treatment and follow up, all close to where you live or work. Physician specialties include allergy/immunology, cardiology, dermatology, endocrinology, gastroenterology, neurology, obstetrics and gynecology, oncology, orthopedics, general surgery, nephrology, urology, sleep medicine, and ophthalmology. St. Luke's offers education programs on a variety of health topics.

For more information, visit www.stlukes-stl.com, call (636) 695-2500 or contact St. Luke's Physician Referral Service at (314) 205-6060.

St. Luke's Health Services at WingHaven

WingHaven Medical Building offers a full complement of medical services and physicians, including urgent care, diagnostic imaging, physical therapy, endoscopy, nutritional counseling, corporate health, pharmacy and infusion services. For flu symptoms, sports injuries or bug

In addition to urgent care facilities, Barnes-Jewish St. Peters O'Fallon Medical Building and St. John's Mercy Urgent Care Center also offer a wide array of medical services and specialties in offices located within their respective buildings along Highway K, including internal medicine, pediatrics, family practice, obstetrics/gynecology and dentistry.

O'Fallon Fire Protection District
"Committed to protecting our community"
IN AN EMERGENCY DIAL 911




119 E. Elm St.
O'Fallon, MO 63366
Administrative:
(636) 272-3493




Chief Michael Ballmann

All your protection under one roof.



Holly A. Stiffler-Wilson, Agent
115 W. Pitman St.
O'Fallon, MO 63366
(636) 379-9170 Bus



©1997 American Family Mutual Insurance Company and its Subsidiaries
Home Office - Madison, WI 53783
www.afl.com
HA-07497 Rev. 1/03




*Restore...
Rejuvenate...
Rejoice!*

**Breast Augmentation
Abdominoplasty "Tummy Tuck"
Ultrasonic Liposuction
Lower Body Lift
Face/Brow Lift
Laser Facial Rejuvenation
Laser Acne Treatment
Buttock Implants
Botox® Injections
Microdermabrasion
Skin Care Services**

**METROPOLITAN
PLASTIC
SURGERY**

MEMBER OF THE AMERICAN SOCIETY
FOR RECONSTRUCTIVE PLASTIC SURGERY
The Mark of Distinction
In Cosmetic Plastic Surgery®

ASPS
American Society of
Plastic Surgeons
(847) 228-9900

James H. Scheu, M.D., F.A.C.S.

636.441.2340
70 Jungermann Circle • Suite 402
St. Peters, MO 63376

314.835.1080
2325 Dougherty Ferry Road • Suite 106
St. Louis, MO 63122

Financing Options Available

www.metplastic.com

SENIOR LIVING

Friendly neighborhoods, affordable and accessible housing, safe streets, reliable services, excellent health care, and community-wide camaraderie help to make O'Fallon a great place for seniors.

Lending a Hand

Through volunteering, seniors can share their knowledge and expertise, develop new skills, learn about city government, meet new people, or simply fulfill a desire to help others. Volunteers enrich their own lives with a sense of accomplishment and fulfillment while helping others. O'Fallon appreciates its active senior volunteer force for its help with city-sponsored activities, programs and events.

Volunteers are always welcome to help out a little or a lot, depending on their interests and availability. You might want to help track a triathlon, transplant a garden expo or help rehearse lines for a Repertory Theatre production. From festivals, fun runs and fairs to city beautification projects, there's something for everyone.

For more information, contact the Volunteer Services Coordinator at (636) 379-5408 or by e-mail at volunteer@ofallon.mo.us.

Senior Center

O'Fallon's Senior Center is a great place to gather for good meals, good conversation, enjoyable events, and special weekend trips and activities. Ongoing events like community pinochle games are fun ways to meet neighbors. The Senior Center is also the community's base of operations for Meals on Wheels; volunteers to help prepare and deliver are always appreciated.

Free medical transportation service is provided for those needing transportation to medical appointments within the St. Louis region. For more information, call the Senior Transportation Coordinator at (636) 978-3306.

The downtown area is served by Schulte Park, a cozy place with lots of shade, grass and benches for a pleasant respite.

Housing Options

Many attractive and affordable senior living options are available, including **Gentemann**



O'Fallon seniors stay active and involved in the community.

Manor, a 60-unit senior apartment complex scheduled for completion in 2005. The two-bedroom units are designed for comfort and convenience and include many amenities both inside and out. Ceiling fans, custom-made blinds and community rooms are appreciated extras. Rooms are spacious, windows are large and kitchens are well-equipped. Residents can gather in common areas and enjoy the walking path and rest-a-bit benches.

Delmar Gardens Retirement Community, a brand-new facility that opened in August 2004, offers many amenities and services. Delmar Gardens-O'Fallon opened with 120 skilled nursing beds, and plans for a 164-unit, independent living retirement center next door to the skilled nursing facility are in the works. This will create a continuum of care, wherein Delmar Gardens' residents can move between independent living and assisted living easily and conveniently.

Established in 1987, **Garden View Care Center** in O'Fallon provides skilled nursing, rehabilitation, dementia care and Alzheimer's care for individuals needing more supervised treatment.

Twin Oaks Estate was established in 1981 by the Huber family with a vision for the future. Their goal is to provide active senior adults with a home that meets their needs, focusing on privacy, health and wellness, activities and spirituality. The newest additions are apartment units and suites to accommodate both singles and couples.

Golden Times

Sisters of the Most Precious Blood

*"Since our foundation we have sought to adore and to serve Christ who shed his blood for the redemption of the world."
— 1985 Constitutions*

The Sisters of the Most Precious Blood began as a contemplative community in Steinerberg, Switzerland, in 1845. A small group of young women from Baden, Germany, gathered for perpetual adoration of the Most Precious Blood in the Blessed Sacrament. Magdalen Weber, known in religious life as Mother Theresa, was elected as the first superior and is honored as the community's founder.

The sisters were devoted to prayer, but immediate needs directed them to education and soon thereafter to the making of Church Vestments. The Sisters were guided from Switzerland to the French Alsace, to Germany, and finally to the United States in 1870. The Motherhouse was established in O'Fallon in 1875.

The Sisters are now considered experts at making Church Vestments. Their intricate embroidery stitches are admired throughout the world. When Pope John Paul II visited St. Louis in 1999, two pieces of the Sisters' hand-stitched garments were presented to him in separate ceremonies: a mitre, symbolizing the pope's authority, and a stole embroidered with the likenesses of St. Vincent DePaul, St. Rose Philippine Duchesne and St. Louis. Each is a patron saint of the Archdiocese of St. Louis. The embroidery work on the stole alone took more than 300 hours.



**Sisters of the
Most Precious
Blood of O'Fallon**
At
St. Mary's Institute
www.cpps-ofallon.org

WORSHIP

In O'Fallon and St. Charles County, there are numerous places of worship for people of every faith. Join the church of your choice in O'Fallon. You are always welcome here!

Time for Renewal

Assumption Catholic Church

115 W. 3rd St., O'Fallon
636-240-3721

Calvary Baptist Church

1409 N. Main St., O'Fallon
636-281-3939

Centerpoint Community Church

636-272-2775

Cornerstone United Methodist Church

1151 Tom Ginnever Ave.,
O'Fallon
636-379-5334

Dardenne Baptist Church

2345 Oak Drive, O'Fallon
636-625-2015

Dardenne Prairie Bible Church

2300 Bates Road, O'Fallon
636-272-3717

Dardenne Prairie Church of Christ

1332 Feise Road, O'Fallon
636-281-1401

Dardenne Presbyterian Church

7400 Highway N, O'Fallon
636-561-4347

Fellowship Church

2977 Hwy. K, O'Fallon
636-980-2298

First Assembly of God

8759 Veterans Memorial
Parkway, O'Fallon
636-379-8064

First Baptist Church of O'Fallon

8750 Veterans Memorial
Parkway, O'Fallon
636-272-4838

First Free Will Baptist Church of O'Fallon

816 Woodlawn Ave., O'Fallon
636-272-5927

Gospel Light Baptist Church

415 Mill Pond, O'Fallon
636-980-3222

Grace United Church of Christ

8326 Mexico Rd., St. Peters
(Between Hwy. K
& Belleau Creek Rd.)
636-240-7621

Holy Cross Lutheran Church

8945 Veterans Memorial
Parkway, O'Fallon
636-272-4505

Hope Bible Church

173 Pieper Road, O'Fallon
636-240-4460

Immaculate Conception Church of Dardenne

7701 Hwy. N, O'Fallon
636-561-4459



Jehovah's Witnesses

1229 Bryan Rd., O'Fallon
636-240-3524

Lake Charles Bible Chapel

Lorene Drive, O'Fallon
636-272-6868

Liberty Christian Church

709 Crestview Dr., O'Fallon
636-240-4412

Lighthouse United

Pentecostal Church

835 W. Terra Lane, O'Fallon
636-272-2946

Morning Star Church

100 Bent Oak Ct., O'Fallon
636-379-9667

New Hope Christian Center

206 E. Elm St., O'Fallon
636-240-4673

New Horizons Christian Church

8763 Veterans Memorial Parkway,
O'Fallon
636-379-2813

New Life Church

120 O'Fallon Plaza
636-240-2567

O'Fallon Christian Church

9380 Veterans Memorial Parkway,
O'Fallon
636-240-3792

O'Fallon Church of Christ

8576 Veterans Memorial Parkway,
O'Fallon
636-272-3080

O'Fallon Church of the Nazarene

709 Crestview Drive, O'Fallon
636-240-4041

Pheasant Point Baptist Church

3400 Highway K, O'Fallon
636-240-9563

Shalom Fellowship Church

306 Sonderen, O'Fallon
636-379-8924

St. Barnabas Church

1400 N. Main St., O'Fallon
636-272-4556

Summit Community Church

1156 Hampton Meadows Drive,
O'Fallon
636-978-4545

SunRise United Methodist Church

7116 Twin Chimneys Blvd., O'Fallon
636-978-2727

Vineyard Christian Fellowship

1727 Belleau Creek Road, O'Fallon
636-978-8463

Williams Memorial

United Methodist Church

1225 Tom Ginnever, O'Fallon
636-272-3443

**GRACE
UNITED CHURCH
OF CHRIST**



Jim Caughlan - Pastor

8326 Mexico Rd.
St. Peters, MO 63376
636.240.7621 Phone/Fax
graceucc@mail.win.org
www.graceucc.net



**D.S. Johnson
Insurance
Group, Inc.**

Dave Johnson Insurance Services, Inc.

409 South Main St.
P.O. Box 845
O'Fallon, MO 63366-0845
(636) 240-7400
Fax: (636) 240-9669